



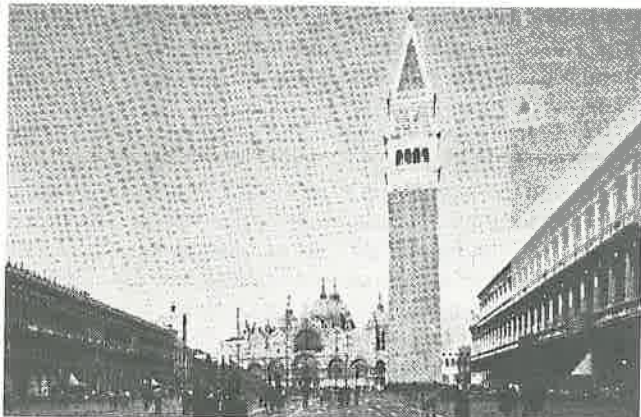
# TOLLWAYS

SUITE 305  
2120 L STREET, N.W.  
WASHINGTON, D.C. 20037

INTERNATIONAL BRIDGE, TUNNEL AND TURNPIKE ASSOCIATION, INC.

September 1984

## Venice Prepares for 52nd IBTTA Annual Meeting



*Hope you'll be here this month to take in the incredible sights of Renaissance Venice, as IBTTA convention-goers count down to take-off for the 52nd Annual Meeting. At left is an unusual view of San Marco Square, with the famous Cathedral and the Bell Tower in the background.*



*At right, the rich tapestry of Venice's Main Street-the Grand Canal-with bobbing boats carrying happy tourists and mundane commerce on its busy surface. The meeting runs September 23 to 26.*

## New 17-Mile Tollway To Be Built in Illinois

"The enabling legislation authorizing a new seventeen mile north-south tollroad in central DuPage County has been signed by Governor James R. Thompson," said Gayle M. Franzen, Executive Director of the Illinois State Toll Highway Authority last month.

"We are very pleased for the Authority to be able once again to contribute to the development of a major new transportation corridor in the Chicago Metropolitan Area," said Franzen.

The seventeen mile project will cost approximately \$286 million. The new road will begin at the south end of Illinois Route 53 (I-90) at Army Trail Road and run south, paralleling Route 53.

It will curve around the southeast corner of the Morton Arboretum, merge with the East-West Tollroad for a mile and then turn south until it connects with, and terminates at, the I-55/Joliet Road Interchange.

The Illinois road will become the second toll road currently under construction in the U.S.A. The Dallas North Tollway Extension is the only pay-as-you-go route now being built, although segments of new toll lanes in the Houston area are now in the design stage, under the jurisdiction of the Harris County (Texas) Toll Authority.

## Record Number of North Americans Now Expected at Venice Convention

IBTTA President Roger Ginocchio, encouraged by registration figures that showed more North Americans likely to attend the 52nd Annual Meeting in Venice this month than attended the 43rd Annual Meeting in 1975 in Paris, declared that all systems were go for the gathering that begins September 23.

While total attendance at Venice is not expected to reach the 511 delegates who were on hand in Paris nine years ago, the U.S. and Canadian delegations are formidable for 1984, an election year in both countries, Ginocchio noted.

One reason might be the continuing favorable exchange rate between U.S. and European currencies. Another is recognition that Venice, while probably the highest-cost tourist city in Italy, still ranks below Oslo, Norway and London, England among European urban locations.

"But the prime reason is Venice's magnificent scenery, its history and its ambience at the very height of the summer season," Ginocchio pointed out. "Weather is still in the seventies Fahrenheit, the beaches are still inviting, and the program promised by our Italian hosts will be exciting and stimulating."

*(Please turn to Page 3)*

## George P. Zilocchi To Head Garden State Parkway



George P. Zilocchi has been named Executive Director of the New Jersey Highway Authority. The Commissioners of the Highway Authority announced their decision to appoint Mr. Zilocchi to this position on Thursday, July 19, 1984. His appointment was made by resolution at a regularly scheduled Highway Authority monthly meeting.

George Zilocchi joined the Highway Authority's Finance Department in 1967 as Supervisor—General Accounting, becoming Assistant Comptroller in 1976. In 1982 he was made Assistant to the Executive Director and in the following year was appointed as Deputy Executive Director. In January, Mr. Zilocchi assumed the duties of Acting Executive Director after Executive Director William F. Smith resigned due to health reasons.

Mr. Zilocchi, 45, resides with his wife, Claudia, and their three children in Little Ferry, New Jersey. The New Jersey Highway Authority operates the 173-mile Garden State Parkway and the Garden State Arts Center in Holmdel, New Jersey.

## Holland Tunnel Now Designated National Historic Landmark

The Holland Tunnel, once described as the "8th wonder of the world", has been officially designated a National Historic Civil and Mechanical Engineering Landmark at ceremonies conducted by several engineering societies and the Port Authority of New York and New Jersey, which operates the facility.

The first underwater tunnel for highway vehicles, its claim to fame is based on an unprecedented tunnel ventilation system, construction of the longest underwater vehicular tunnel and the then largest twin tube in diameter—each 29.5 feet.

Participating in the commemorative ceremonies were leaders of the American Society of Civil Engineers, American Society of Mechanical Engineers and Assistant Executive Director Robert F. Bennett of the Port Authority.

## Sydney Harbour Bridge Tolls Don't Cause Traffic Delays

Answering critics who claimed that toll collection on the Sydney Harbour Bridge in Australia is a major cause of traffic delays, the Department of Main Roads in New South Wales has conducted a study showing that queuing delays on the eight-lane structure cause more jams than toll collection.

Toll gate capacity is greater than the capacity of the mid-section of the bridge, the survey showed. Several times in the past eight years toll collection has been suspended for periods of one to five days, but in no case did traffic flow improve significantly. What is needed, short of a ninth lane on the bridge, is an improved system to detect and remove vehicle breakdowns. A four-minute delay in rush hour in one lane can cause traffic to back up one kilometer, the study asserted. The Department is currently developing a driver aid system for the Bridge.

## Miller Writes "A Ferry Tale" As Service Reaches 20th Year



Coinciding with the 20th anniversary of the Cape May-Lewes Ferry service operated by the Delaware River and Bay Authority, IBTTA Active Member, its Executive Director William J. Miller, Jr., has written his second book, this one titled "A Ferry Tale."

It's an entertaining story of the important transportation link between the picturesque resort communities at either end of the pleasant journey across the mouth of Delaware Bay. It recounts the history of the ferry system from its beginning in the early 1960's, when it purchased ferries from Virginia at the time the Chesapeake Bay Bridge-Tunnel was completed, through its current popularity as the passageway to the gambling casinos of Atlantic City.

"A Ferry Tale" describes the years of planning, environmental studies, negotiations between states and with labor, and the fascinating events in the ferry's history ranging from ice jams to mishaps and celebrations. The twelve chapters of "A Ferry Tale" are extensively illustrated with over 50 photographs, maps and charts and are peppered with humorous and interesting anecdotes.

This is Miller's second book. In 1982, he turned out "Crossing the Delaware," the story of the Delaware Memorial Bridge and its twin. He is a Past President of IBTTA, the present Chairman of its Governmental Relations Committee, and a Director of the International Road Federation.

The hardback version of the book is available for \$9.95 plus \$1.50 postage and handling from Delapeake Publishing Co., P.O. Box 1148, Wilmington, Delaware 19899. A soft cover version is \$5.95.

## Toll Roads in Ohio, New York Open First Fast Food Outlets

Two more major U.S. toll roads got their first fast food restaurants in mid-July, 1984, as the Ohio Turnpike opened two new Rax Restaurants at its Commodore Perry and Erie Islands Service Plazas, while the New York State Thruway inaugurated a Burger King, operated by Howard Johnson Corporation, at its Iroquois Service Area.

The two Ohio outlets have been operating since May, while final modifications to the buildings have been made. The Gladieux Corporation of Toledo has converted the two facilities and holds the northwestern Ohio franchise for Rax Restaurants, Inc., a rapidly-growing company headquartered in Columbus, Ohio.

Acceptance by the public has been enthusiastic, according to Executive Director Allan V. Johnson. With the new road financing, more fast food units will be sought, he said.

The New York installation is in a brand-new half-million dollar restaurant near Little Falls in Herkimer County. It is also adjacent to a conventional Howard Johnson restaurant and two gasoline service stations, with the other restaurant reachable by a pedestrian bridge. Howard Johnson's is the sole franchisee for Burger King restaurants on toll roads in the United States.

## French Autoroute Companies Create New Engineering Group

Seven French semi-public toll road companies which operate the major part of the nation's toll highway network, SCETAUROUTE, SCET-Cooperation International and Caisse des Depots-Development, have entered into partnership to create TRANSROUTE, a group for the international promotion of French engineering for transport infrastructures, bridges, tunnels and turnpikes.

SCETAUROUTE (Societe Centrale d'Etudes de Realisations Routieres) has completed the construction of 2200 km of highways in the past 13 years, and SCET (Societe Centrale pour l'Equipelement du Territoire) are IBTTA Associate Members. TRANS-ROUTE has applied for Associate status as well. Leon-Paul Leroy, President of SCETAUROUTE, is also President of TRANS-ROUTE.

## David Smith Dies in Canada

TOLLWAYS has learned with regret of the passing on January 4, 1984 of David C. Smith, former General Manager of the Saint John Harbour Bridge Authority in New Brunswick, Canada. The present General Manager is Robert J. Clark.

## French Toll Roads Report Traffic, Revenue Increases

The annual reports of two French toll roads, Societe des Autoroutes du Sud de la France (ASF) and Societe de l'Autoroute Paris-Normandie (SAPN), indicate traffic and revenue increases in 1983 compared to 1982.

ASF, the largest of the ten French toll roads in terms of kilometers operated, handled 78.8 million vehicles in 1983, an increase of 3.9 percent over 1982. Toll receipts on the 1,249 kilometer system totaled 2.1 billion francs (about US \$238 million in August 1984).

An increase in the number of kilometers traveled per vehicle helped push up revenue in 1983. Trucks accounted for 18.0 percent of the vehicles using the ASF system and 24.1 percent of toll revenue. While traffic increased, the accident rate dropped. The fatality rate was 1.15 persons per 100 million kilometers traveled, the lowest in ten years, and a decrease from 1.33 in 1982.

SAPN, which operates a 187 kilometer toll road linking Paris with Normandy, reports 33.4 million vehicles used the highway in 1983, an increase of 2.6 percent over 1982. Toll revenues increased 15.2 percent in 1983, reaching 246 million francs (about US \$27.9 million). Total accidents dropped from 367 to 312 and fatalities declined from 21 to 12.

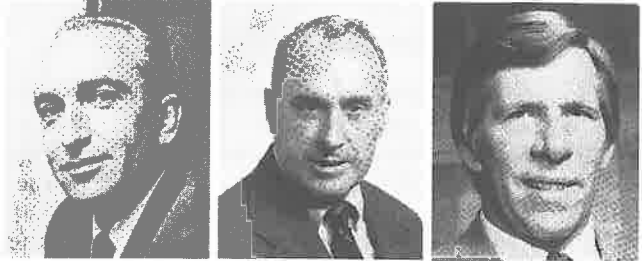
## Truck Traffic Increase Projected

United States motor carrier tonnage will increase more than 10 percent a year between 1983 and 1988, according to a survey of motor carrier executives reported in the Highway Common Carrier Newsletter. Booz, Allen and Hamilton received 126 responses to a survey sent to 500 for-hire motor carriers in 1983. The healthy tonnage increase projection was attributed to both secular expansion in the economy and continued motor carrier share gains against railroad carload traffic. The projected increases are consistent with the large upswing in truck traffic noted on USA toll roads in the first half of 1984.

## Annual Meeting (from page 1)

"The subjects indicate the surging growth and importance of the toll financing system of building and operating roads," he said. Not only are the speeches and discussions interesting in themselves, but the opportunity to swap shop talk with toll road leaders from around the world is unmatched at any other road gathering anyplace.

"Where else does East meet West? Old World meet New World? In the transportation business, this meeting is unique," the popular French executive concluded.



*These three are among the speakers in Venice. At left, Hubert Maillant, of ESCOTA in France, is a panelist on "Cooperation and Technical Assistance Among Toll Agencies." Arthur J. Fox, Jr., (center) Editor of Engineering NEWS-RECORD, New York, will wrap up a seven-man discussion of "Progress in Toll Facility Construction and Operations." At right, Orlando-Orange Country Expressway Authority Chairman James B. Greene is one of the panelists on "The Changing Character of Toll Facilities." He was erroneously listed on another panel in last month's TOLLWAYS.*

## Portuguese Toll Road Built To Protect Environment

Portugal's Auto-Estrada do Norte toll road has special construction features aimed at protecting the rural environment, according to a recent article in *World Highways*. The roadway crosses a low-lying agricultural area subject to frost and fog rolling down from the mountains. A highway built on a raised embankment would dam up cold air flowing down from the mountains making the agricultural land between the road and mountain virtually useless. As a result, the toll road was built on a combination embankment and viaduct that allows the cold air to flow freely through the viaduct and dissipate without causing additional harm to the farm lands.

## Italian Toll Roads Progress

The Italian "Autostrade" system included 5,900 kilometers (3,644 miles) of toll roads and three alpine toll tunnels at the end of 1983. There are currently 164 kilometers of toll road under construction and an additional 699 kilometers planned. The members of AISCAT, the Italian toll road and tunnel association, operate the second largest national toll road system in the world.

Traffic on Italian toll roads increased slightly over 1982. Passenger car traffic reached 25.3 billion vehicle-kilometers, an increase of 1.4 percent over 1982. Commercial traffic rose .1 percent to 10.2 billion vehicle-kilometers.

## Westgate Bridge Carries 50 Millionth Vehicle

The Westgate Bridge in the suburbs of Melbourne, Australia celebrated its 5th birthday on November 15, 1983, according to an article in World Highways newsletter. A month later the 50 millionth vehicle crossed the bridge. The driver received a new car from the Victoria Ministry of Transport. The Westgate Bridge is a 2.6 kilometers-long cable stayed structure that has eight traffic lanes.

## Membership Changes

*Lake Champlain Bridge Commission* has moved its offices to 40 George Street, P.O. Box 1509, Burlington, Vermont 05402. Two new Commissioners are *Floyd Handy* of St. Albans, VT and *George A. Schiavone* of Shelburne, VT... *John Smolley, Jr.* has been advanced from Deputy Administrator to Administrative Director of the *Oklahoma Turnpike Authority*... *The Turnpike Authority of Kentucky* has moved to Room 257, Capitol Annex, Frankford, KY 40601, but the telephone number remains (502) 564-2390... *Jean Muller* and *Gene Figg* have bought out their French engineering firm partner and now each own 50% of *Figg and Muller Engineers, Inc.*, in Tallahassee, FL... *Edward H. Krueger*, *Motorola Communications & Electronics, Inc.*, has a new address at 1309 East Algonquin Rd., Schaumburg, IL 60196; (312) 576-7000.

## Spanish Road Traffic Down, Revenues Up

The Seville-Cadiz toll road operated by *Betica de Autopistas* suffered a 7 percent decrease in traffic in 1983, due to effects of a recession which hit this sector of the country in particular. However, a toll rate increase produced revenues of 736 million pesetas (about \$4.5 million U.S.), an increase of 18 percent over 1982. Traffic on the Cadiz Bridge, also operated by *Betica*, went up 14 percent to 5.7 million vehicles in 1983.

## Jimmy Allen, Texas, Dies at 78

TOLLWAYS has learned that *James G. Allen*, former Secretary-Treasurer of the Texas Turnpike Authority, died on July 15, 1984, at 78 years of age in Valley Mills, Texas, of a heart attack. Allen joined the Authority in 1954. He was elected Secretary-Treasurer in 1958 and served for 15 years until his retirement in 1973. He served on IBTTA's Board of Directors from 1960 to 1963.

## Bridge Course Offered

"Highway Bridges: Inspecting, Rating and Upgrading" is the title of a two-day course offered by the Continuing Engineering Education division of George Washington University on November 28-29, 1984. The course is taught by *Abba Lichtenstein*, President of IBTTA Associate Member *A.G. Lichtenstein and Associates*. The course will focus on inspection and evaluation of existing bridges and repair and rehabilitation of structurally inadequate and geometrically obsolete bridges. The cost of the course is \$625. For more information call toll free (800) 424-9773.

## Officials of Three IBTTA Bridges Mark Recognition of Seaway Trail



The Seaway Trail extending from Massena, New York to the Pennsylvania line along the St. Lawrence River and Lake Ontario has been designated as a national recreation trail by the United States Department of Interior.

Above are left to right: *Richard McCarthy*, CM, St. Lawrence Seaway Authority; *Robert J. Hammill, Jr.*, Assistant to the Manager, the Seaway International Bridge Corporation Ltd.; *Lauren C. Beaver*, Niagara Falls Bridge Commission; *Russell Wilcox*, Executive Director, Thousand Islands Bridge Authority and *Vincent Dee*, Chairman, Thousand Islands Bridge Authority and President of Seaway Trail, Inc.

## IBTTA Calendar

MAINTENANCE—Fall Conference, Hyatt Regency Woodfield, Schaumburg, IL, October 14-16, 1984.

1985 WORKSHOP—Inter-Continental Hotel, New Orleans, LA, April 14-16, 1985.

OPERATIONS & PUBLIC RELATIONS—Joint Committee Meeting, Hotel Sheraton Plaza, Tempe, AZ, May 5-8, 1985.

53rd ANNUAL MEETING—Westin Hotel, Boston, Massachusetts, October 13-16, 1985.

## New Members

### Active

Harris County Toll Road Authority  
233 Benmar, Suite 620,  
Houston, Texas 77060

Principal contact: *W.W. Thorne*, Executive Director

### Associate

Boschung Company  
(Ice & snow maintenance equipment)  
530 Armory Drive, South Holland, IL 60473

Principal contact: *Marcel Boschung, Jr.*, Vice President

### Universal Machine Company, Inc.

(manufacturers of coin & currency  
counting, packaging machines)  
5201 South Hampton Road, Dallas, TX 75232

Principal contact: *James B. Hale*, Marketing Mgr.

### Associate

On Line Inc.  
(Gasoline retailer on toll roads)  
1228 Martin Avenue, New Kensington, PA 15068  
Principal contact: *Frank R. Salvati*, President